



500 Business Center Drive
Phone: +1.412.494.2800
www.secureswitch.com

Pittsburgh, PA 15205
Fax: +1.412.494.5550

USA
CAGE Code 1BGJ7

SwitchCenter Installation:

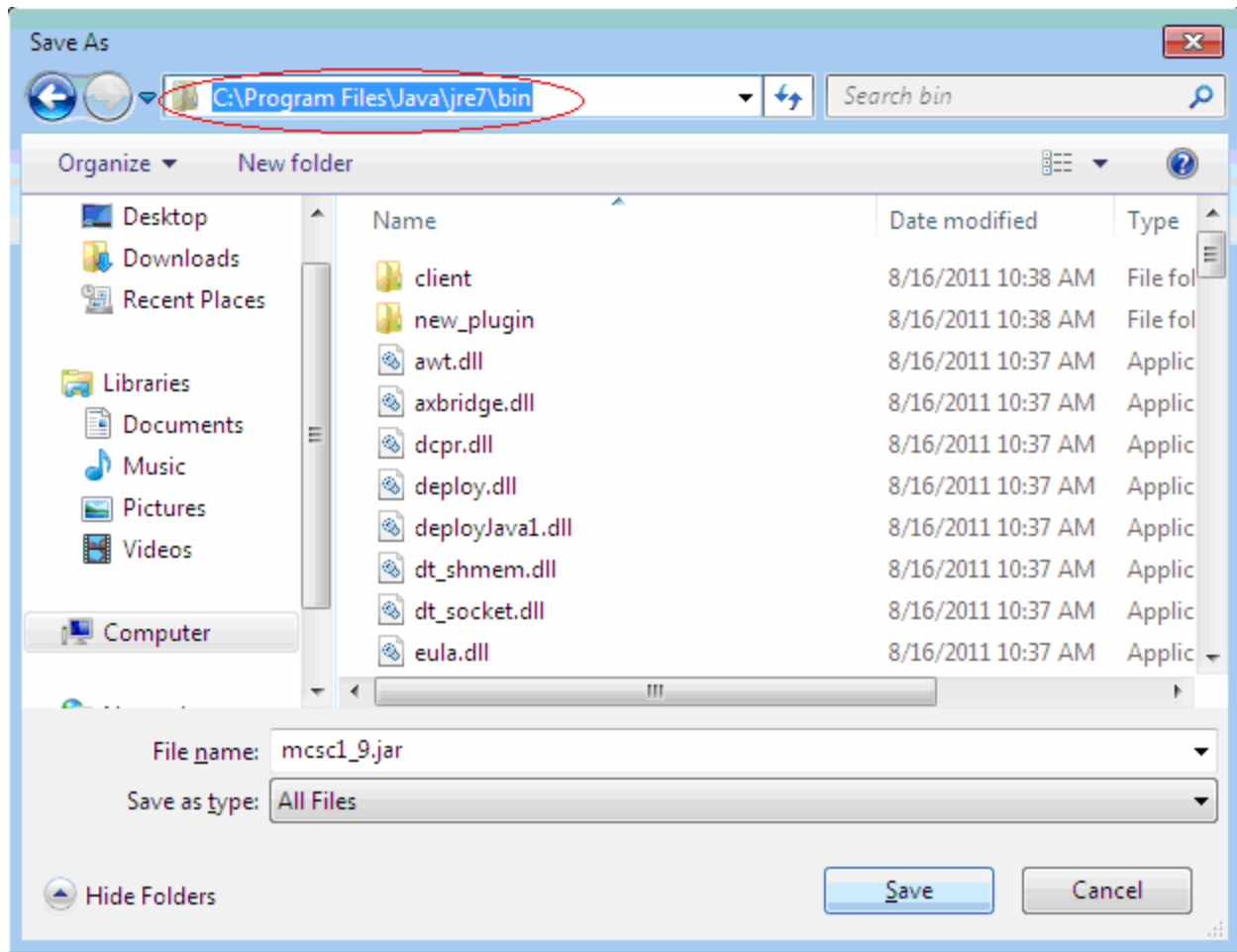
SwitchCenter software requires a computer running the Java Platform, Standard Edition (JSE). The minimum JSE version required for SwitchCenter is release 1.4. The latest version download is `jre-7-windows-i586.exe V7.0.0.147`. Your system may already have JRE installed, check the Program Files directory for a Java directory.

To install JRE go to the Oracle website:

<http://www.oracle.com/technetwork/java/javase/downloads/java-se-jre-7-download-432155.html> . On the download page you need to download the Java Runtime Environment (JRE) for the appropriate operating system. Follow the Sun provided Installation Instructions to complete JRE installation on your system.

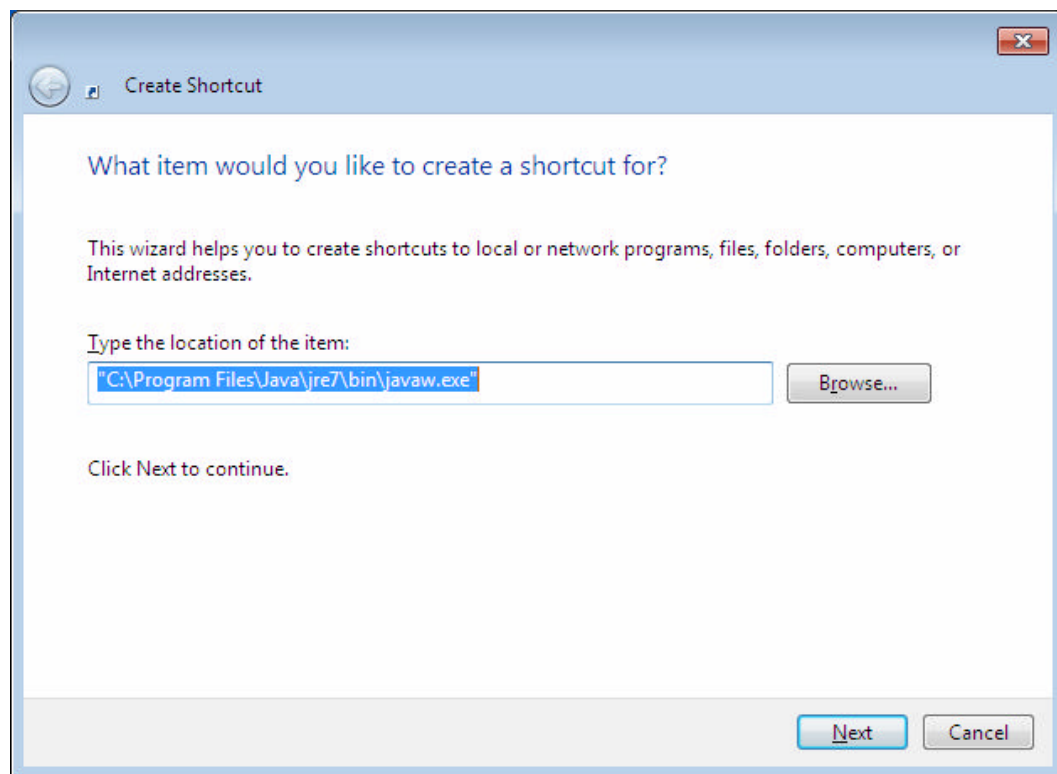
After successfully downloading and installing the JRE, you will need to download the SwitchCenter (JAR) file from <http://www.secureswitch.com/SwitchCenter.htm> and setup the SwitchCenter application.

The SwitchCenter Application is delivered as a single JAVA ARchive (JAR) file which you can download from website www.secureswitch.com (click on the "Product" radio button, and then click on the "SwitchCenter Graphical User Interface. The link is located at the bottom with this Installation Instructions. Use the Save feature of your browser to download the file. Verify that the name and extension of the file is mcsc1_9.jar, (**Note: If the file has a .zip extension, you must change it to .jar prior to saving.**) Browse to "C:\Program Files\Java\your version\bin\" and click Save. This is to save the file in the same folder as the "javaw.exe" file.

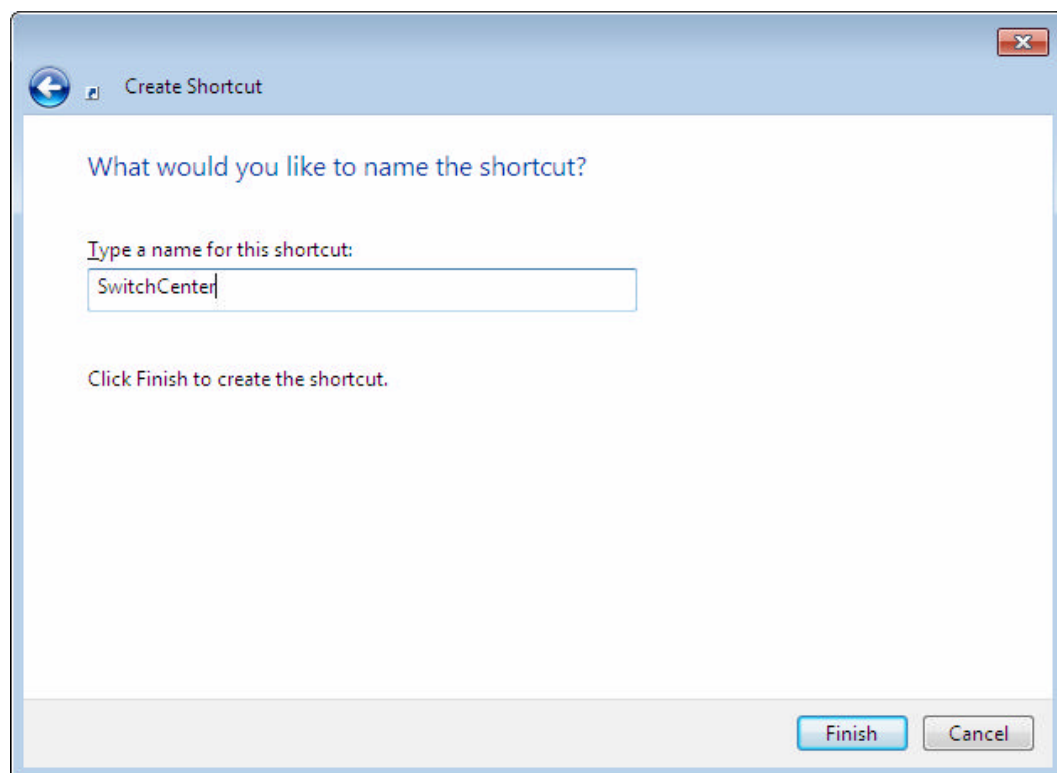


Once the .jar file is downloaded and saved, you need to configure a shortcut for SwitchCenter in the following way:

Create a shortcut to run the SwitchCenter application by right click on the Desktop, then select NEW, then select shortcut.

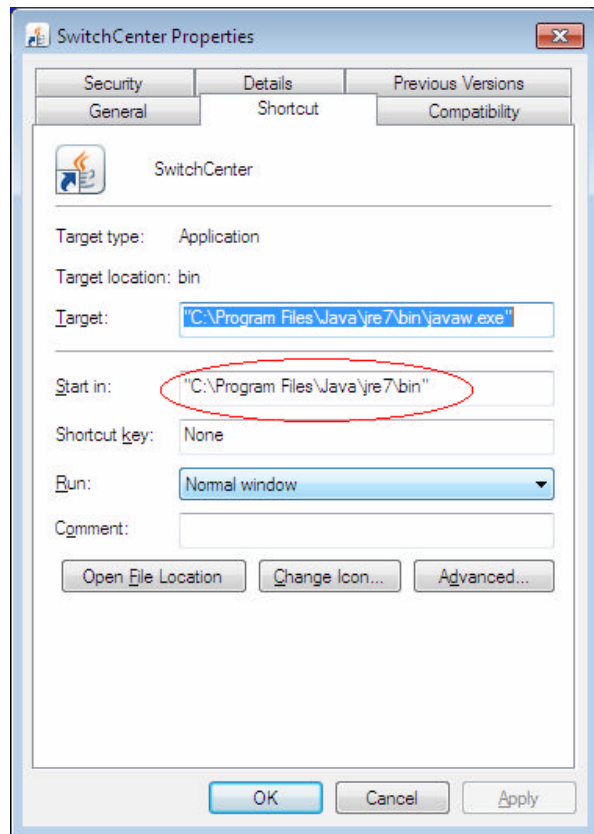


Browse to the location above or where the Javaw.exe is located and click on the javaw.exe file then hit OK. After you have the location for Javaw.exe like above, click next.



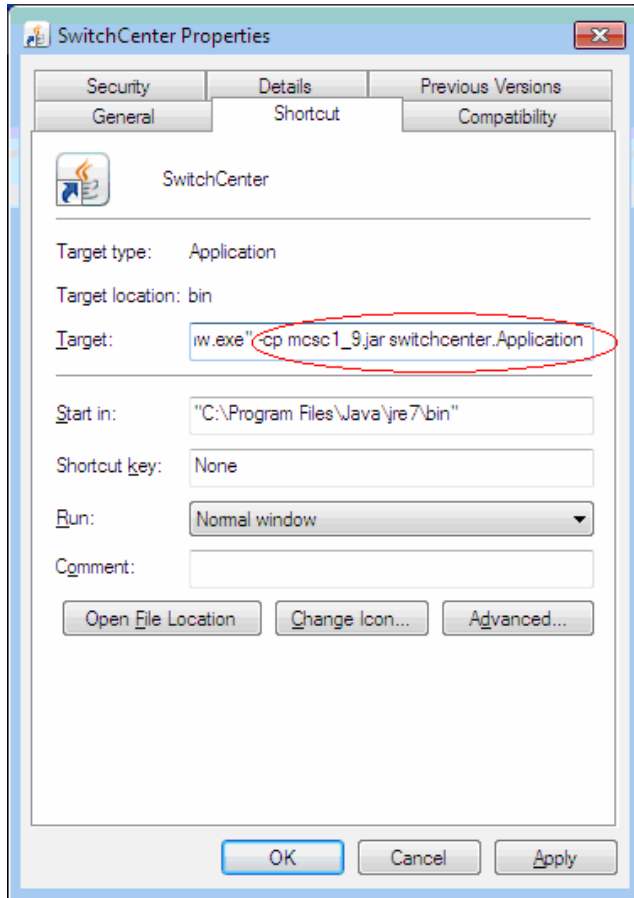
Then you can name your shortcut and Click Finish. This will add a shortcut to your desktop for SwitchCenter.

Next you need to configure the shortcut by right clicking on the shortcut and select Properties.



Under the Shortcut tab, be sure that the working directory (the "Start in:" location) is set to the bin directory where the SwitchCenter .jar file is:
Start in: **"C:\Program Files\Java*(your version)*\bin"**

You will need to add to the "Target:" as follows:



Target: "C:\Program Files\Java*(your version)*\bin\javaw.exe" **-cp mcsc1_9.jar switchcenter.Application**

(Note: The double quotes are required and switchcenter.Application is case sensitive.)

After you add the **-cp mcsc1_9.jar switchcenter.Application** to the target click OK.

You may also want to select the run minimized option to hide the Command window that launches the application.

Again, if necessary change the path "C:\Program Files\Java*(your version)*\bin" to the location that your Java runtime files are located, and change the SwitchCenter .jar filename.

After you have made all the changes click on Apply and then OK to save your changes to the desktop shortcut.

After the installation of SwitchCenter is complete, you should be able to run SwitchCenter by double clicking on the desktop item. See Operation manual for Configuration settings and the operation of the software.